


## Specification

Model	LC-UV6090	
Head Details	Head type	Epson XP600
	Quantity of head	1-3 pcs
	Resolution	360 x 1440 dpi, 360 x 2160 dpi, 360 x 2880 dpi
	Head cleaning	Fully automatic cleaning, with anti-jam flash and automatic moisturizing function
Speed	4pass	11m <sup>2</sup> /h
	6pass	5.5m <sup>2</sup> /h
	8pass	3 m <sup>2</sup> /h
Ink	Type	UV ink
	Color	CMYK+Lc+Lm+White+Varnish
	Capacity	Cartridge each 1500ml
	Ink supply	Negative pressure continuous supply(CISS)+ink lack of ink alarm+ white ink stirring
Print Media	Curve	LED
	Media size	600 x 900mm
	Media	Glass, aluminum panels, pvc, pen, metal, wood, tiles, cellphone case, etc
Machine device	Media thickness	150 mm
	Sensor device	Geomagnetic magnets automatically measure height sensing
	Printing table	Vacuum
Operate contril system	Fixture configuration	Cylinder/Pen fixture(optional)
	Language	Chinese/English
	Format	JPG/TIFF/PNG/PDF etc
	Operate system	Operate system
Printing system	Environment	Temperature range:20°C~35°C, humidity range:35%~65%Rh
	Interface	RJ45
	Rip software	Maintop UV/Photoprint UV version
Others data	Power details	AV110V, AV220V, 50Hz/60Hz
	Machine size	1653mm x 1696mm x 852mm(L*W*H)
Size/Weight	Package weight	250 kg






## 6090 Desktop UV flatbed machine [ EPSON XP600 1-3pcs ]

 [buroteks](#)  [buroteksstore](#)

 [www.buroteks.com](http://www.buroteks.com)

 [buroteksdenizli](#)



 İzmir Asf. Üzeri Sümer Mh. 2509 Sk. Merkezefendi / DENİZLİ  
 +90 554 498 98 81 - +90 258 242 46 10  
 pazarlama@buroteks.com

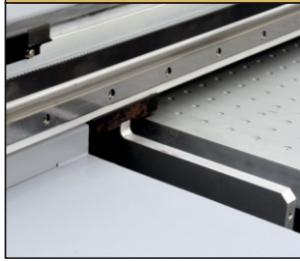
**BUROTEKS**  
TEKNOLOJİ REKLAM DİJİTAL BASKI

 [www.buroteks.com](http://www.buroteks.com)



## Details

### X-axis



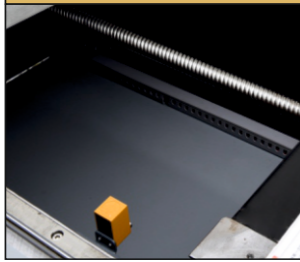
X-axis using the silver double linear rail transmission, to ensure that the carriage printing more stable;

### Electrostatic eliminator



The upper part of the UV lamp on the left side of the ink truck is fitted with a professional electrostatic eliminator, which effectively avoids the interference of static electricity on the print of the printhead and improves the efficiency and accuracy of the machine printing.

### Y-axis



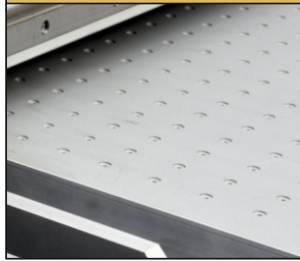
Y-axis is a dual-line rail screw dual-transmission control system to ensure the stability of the Y-axis motion state of the carriage, but also to ensure the accuracy of the Y-axis motion trajectory;

### Intelligent ink-deficing alarm system



Intelligent ink-deficing alarm system can realize that when the ink in the cartridge is below the defined value, there will be a flash of light and an alarm sound, prompting the user to add ink;

### Platform printing height



Platform printing height can be adjusted at 0-15cm, to ensure that different thicknesses of materials can be used, greatly improving the application!

### Standard 8 cartridges



Standard 8 cartridges, for later expansion configuration to prepare to meet the different needs of customers!

### Leadshine motor



Using famous brand brushless motor, the printing process is more stable!

### Platform restorer

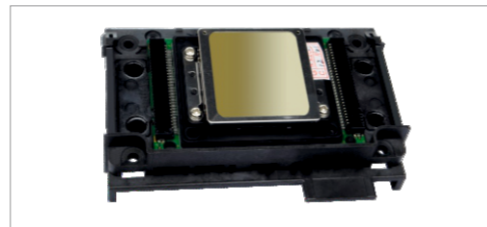


Platform restorer, control platform revert to a fixed position to prevent platform bias!

## Printhead information

### Epson printhead

- ▶ 180 nozzles per color, resolution 360\*2880dpi;
- ▶ Higher speed and stable.
- ▶ Adopt 12FULL smartly printing technology.
- ▶ Ink droplet changing technology.



## Application

Media: Glass, aluminum panel, acrylic plate, tiles, cell phone case, paper shell, wine bottle, composite board, rubber, PVC, logo signs and so on.

### organic material



### acrylic plate



### wood board



### phone case



### silk spun cloth



### aluminum plate



### leather



### carton



### bamboo weaving



### plastic products



### CD case



### cylindrical media



## Computer Configuration Requirement:



**Win7 32 bit/64 bit operation System**  
(Win7 32-bit or less system needs Pre-installed .net4.0)

CPU:Core i3 at least

Memory:4G at least

Hard disk:120G fast(7200 PRM)

Monitor:17 inch flat panel display ,

true color display card ,

support resolution above 1024X768.